



Packaging Machines International, Inc.

**SHRINK BUNDLING SYSTEMS**

Quality  
Innovation  
Service



## GR SERIES "Multi-Packer"

### Automatic Side Infeed Systems

PMI GR Series offers customized side entry infeed systems designed with product specific controls. Wrapping capabilities include oval or round containers, cartons, and bagged products for multi-pack configurations. Standard market applications for this product are dairy, food & beverage, pharmaceutical, bakery and personal care. PMI is a market leader for engineered multi-pack solutions offering automation combined with low cost packaging.

## MODEL GRP

### Pharmaceutical Multi-Packer

Compact single frame shrink bundler offers single or dual lane wrapping for multi-packs. Versatile system wraps bottles, cartons or trays with quick changeover capability.

### FEATURE HIGHLIGHTS

Compact integral tubular frame design

Dual upper and lower film roll cradles

Independently driven wrapper and tunnel

Sprocket driven plastic chain conveyors

Energy efficient shrink tunnel design

Quick change Low-Temperature seal bar design

Custom engineered infeed systems



*Dual roll film cradle system.*



*Extended infeed conveyor with 1:2 lane divider.*



*Quick change "no tool" adjustments.*





## CSI-TW SERIES

### High Speed Tray Wrappers

PMI's CSI-TW Series includes three models for continuous motion tray/shrink wrapping. Models offer medium to high speed continuous motion with many standard features which make the system easy to operate and maintain. PMI's cam motion/seal carriage design performs with consistency and accuracy applying film to the tray. The systems are designed and manufactured for continuous operation on high speed production lines. PMI's high efficiency seal bar and shrink tunnel design insures a quality wrap with every cycle.

## MODEL CSI-C

### Compact Continuous Motion Tray Shrink Wrapping

PMI has introduced the most compact continuous motion system on the market. The CSI-C model has an on demand cam driven seal carriage with wrapping capacity up to 45 tpm. Side mounted film cradles allow for quick and easy roll changes.



## FEATURE HIGHLIGHTS

Integral tubular frame design

Reciprocating motion cam driven seal carriage

Dual upper and lower film roll cradles

Sprocket driven plastic chain conveyors

Energy efficient shrink tunnel design

Hi-efficiency dual element seal bar

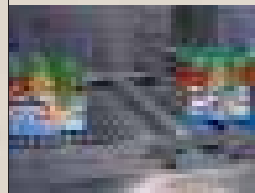
On board product pacing with synchronized flight bar



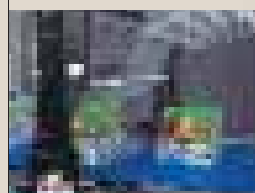
*Easy load floor mounted film cradles.*



*The flight bar delivers trays with perfect timing.*



*Consistent sealing with cam motion.*





## SI SERIES

### Automatic Inline Shrink Wrapping System

PMI SI Series models are designed for a wide range of market capabilities including food & dairy, beverage and industrial. These compact machines offer a small footprint for low to medium wrapping speed. The systems are engineered and manufactured for continuous operation in 24/7 environments. PMI is the market leader in technology for heat seal and shrink tunnel efficiency.

### FEATURE HIGHLIGHTS

- Compact integral tubular frame design
- Dual upper and lower film roll cradles
- Independently driven film rolls
- Independently driven for wrapper and tunnel
- Sprocket driven plastic chain belt conveyors
- Energy efficient shrink tunnel design



### FEATURE HIGHLIGHTS

- Integral tubular frame design
- Dual upper and lower film cradles
- Independently driven wrapper and tunnel
- Sprocket driven plastic chain conveyors
- Energy efficient shrink tunnel design
- Quick change low temperature seal bar design
- Inline product collating for multi-packing



## SIR SERIES "Multi-Packer"

### Inline Multi-Packing System

PMI SIR models include inline collating for multi-packing. Wrapping capabilities include bottles, cartons and bagged products. Some common applications for this model are personal care products, pharmaceutical, juice pouch multi-packs and pet food. These inline systems minimize floor space requirements and offer secure product controls. Reduced labor and packaging costs are direct benefits from shrink wrapping with the SIR series multi-packer.







## BL SERIES

### Single Roll Shrink Film Wrapping System

The BL series features single roll/bottom lap technology eliminating a heated seal bar design. Film application to the product occurs by cutting and placing pre-cut lengths of film around the product while overlapping the film underneath. The lap seal is completed as the product is conveyed through the shrink chamber. Controlled airflow and direction within the tunnel chamber ensures a uniform shrink of the film. This technology allows for the use of clear or print registered shrink films. BL models come standard with mounting for two 20" diameter film rolls including a splicing station.

## MODEL BL-60 & BL-45

### Single Roll Tray Wrapping Systems

PMI offers two models with performance capacities to wrap up to 60 trays per minute. Standard Allen Bradley controls with panel view plus interface make the system operator friendly allowing for easy adjustments and fast change overs.



## FEATURE HIGHLIGHTS

Two piece heavy duty integral frame construction

Tray metering belt infeed with flight bar pacing

Servo controlled film feed module

Pneumatic locking film mandrels

Continuous film wrapping mechanism

Efficient tunnel design with easy access heat element trays

Operator activated film splice bar



*Pneumatic locking film mandrels with splicing station.*



*Pneumatic compensating film dancer system for consistent film delivery.*



*Servo controlled film feed with hinged conveyer for easy access.*





## About Packaging Machines International

PMI has just celebrated our 13th anniversary as a manufacturer of shrink-wrapping systems. The company's focus has always been to produce the very highest quality equipment. The dedication of our employees with an emphasis in engineering has influenced the innovation and development of our products. The challenges from the industries we serve have always inspired a better solution from PMI. We have developed a strong group of OEM partnerships to satisfy our customer requirements for complete end-of-line packaging solutions, allowing our company to focus on the core product, "shrink bundling", bringing the very best quality with value and service. We can guarantee our product will be part of your packaging solution. Consider Packaging Machines International for your next project.

## About Shrink Bundling

The expanded growth of shrink bundling is a direct result of a consumer driven competitive market place. The mega retailers demand for lower cost, displayable packaging, and the requirement for "source reduction" have increased the need for shrink bundling. Tray/shrink-wrapping answers the "source reduction" demand for less materials and lower case costs. Multi-packing with lower cost shrink-wrapping materials provides retailers with displayable packages at a higher dollar SKU sale and minimal stocking labor. The market for shrink-wrapped multi-packs are in demand for all consumer point of purchase products.

## Integrated Systems

PMI has expanded our market capabilities to include the combination of shrink packaging with corrugated packaging equipment. End of line packaging solutions for wrapped multi-packs in cases or trayed products in shrink film are now available from PMI – "The Single Source".

### Markets Served

- Aseptic
- Bakery/Snacks
- Beverage/Juice
- Dairy/Ice Cream
- Food Processing
- Industrial Products
- Paper/Printing
- Personal Care
- Pet Food
- Pharmaceutical
- Shelving/Fixtures
- Sugar/Flour/Grain
- Textiles

### Equipment Type

- Form-Fill-Seal
- Full Closure/Side Seal
- Multi-Packers
- Shrink Tunnels
- Single Roll/Bottom Lap
- Sleeve Wrappers
- Tray/Shrink Systems
- Tray Stackers
- Tray Turners



**Packaging Machines International, Inc.**

1260 Lunt Avenue / Elk Grove Village, IL 60007  
 800.871.4PMI / (800.871.4764)  
 847.640.8451 / Fax: 847.640.8732  
 E-mail: [pmiinc@pmi-intl.com](mailto:pmiinc@pmi-intl.com)  
 Web site: <http://www.pmi-intl.com>



©2005 by Packaging Machines International, Inc.  
 Printed in U.S.A.